

EXTRACO
INDUSTRIES INDIA PVT. LTD



CORPORATE PROFILE

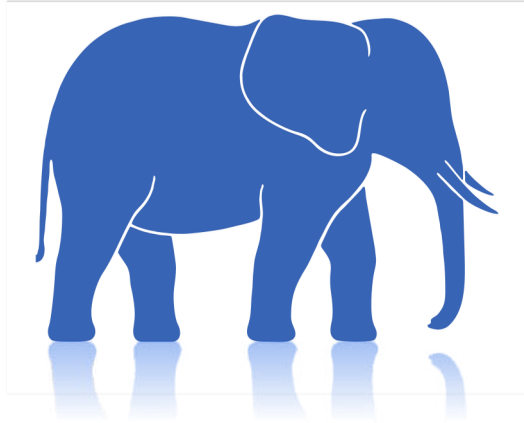
GFRC | GFRG | GFRP | UHPC | Steel

www.extracoind.com

1. About Extra Co UAE

1.1. Company History

Extra Co was established in Sharjah, United Arab Emirates in the year 1979. The company started out as a very small operation with a few workers producing small fibreglass water tanks. Since then, Extra Co has significantly grown in



size and capabilities to become a leading industrial manufacturer in the region for thousands of different products, with more than 5,000 employees throughout the United Arab Emirates. Extra Co's products and services have reached many parts of the world, including the Middle East, Africa, Europe, and the United States of America.

Throughout its operations, Extra Co has adopted state of the art manufacturing technologies and has pioneered new manufacturing methods to bring customer requirements to reality; all while maintaining the highest quality standards. Extra Co possesses several accreditations

for its product ranges and operational procedures from the most globally acknowledged and reputed quality standards institutions.

Extra Co product portfolio grew over the years to form four major Business Units:

1. The **Fibreglass Composites Business Unit** manufactures everything from standard fibreglass infrastructure products to specialized custom fibreglass products
2. The **Prefab & Interiors Business Unit** manufactures both standard and custom-designed prefab houses for temporary and permanent use, as well as complete interior fit-outs and carpentry work
3. The **Precast Business Unit** produces and installs standard and custom elements in GFRC, gypsum, and concrete
4. The **Metal Works Business Unit** produces and erects all types of Steel Structures, designs and manufactures scaffolding systems, supplies cut and bent steel reinforcement bars for the construction industry, and manufactures steel profiles for structural and sheeting requirements

1. **Extra Co Fibre Glass & Prefab Houses LLC** - Sharjah, Dubai and Abu Dhabi
2. **Extra Co Industries LLC** - Ras Al Khaimah and Dubai
3. **Extra International Fibre Glass & Prefab LLC** - Abu Dhabi
4. **Green Oasis General Contracting Co. LLC** - Dubai
5. **Al Badr Contracting & Civil Construction Co. LLC** - Sharjah, Ras Al Khaimah, UAQ, Fujairah, Ajman and Abu Dhabi
6. **Al Badr Al Thahabi Contracting Co. LLC** - Dubai

UAE Accreditations



ISO 9001:2015, 14001:2015 and 18001:2007 Certified
for all products and services



WRAS (Water Regulation Advisory Scheme) Certified for
GFRP Sectional Water Storage Tanks (Hot Press) up to 50°C,
GFRP Pipes & Fittings, GRE Pipes & Fittings (Hot and Cold)



UL (Underwriters Laboratories Inc.) Approved for GFRP
Fuel Tanks (single and Double Walled) as per UL 1316



Germanischer Lloyd Certified for GFRP Fuel Storage
Tanks



Warringtonfire Certified for GFRP Kiosk



BM Trada – Fire-Rated Door Manufacture
Scheme



Dubai Civil Defense – Certified GFRC Panel
& Cladding Assembly

Capacities & Capabilities

Sr. No.	Factories & Facilities	Areas Approx	Manpower	Capacity
1	GFRG, GFRG & Precast	80,000 Sq.m	1200	650 - 800 sqm. per day
2	Structural Steel Buildings, Metal Works & Aluminum Factory	100,000 Sq.m	800	4500 MT per Month
3	Sewage & Drainage Products Factory	20,000 Sq.m	100	1,000 Tons per year
4	GFRP Tanks & Vessels Factory	20,000 Sq.m	80	1,000 Tons per year
5	GFRP Panel Tanks Manufacturing Plant	20,000 Sq.m	70	300 to 350 panels per day
6	GFRP Pipe & Fittings Manufacturing Plant (Discontinues Filament Winding Process)	20,000 Sq.m	150	We can manufacture pipes of different diameter, up to 5 Meter Diameter & 200 LM / day
7	GFRP Pipe & Fittings Manufacturing Plant (Continues Filament Winding Process)	20,000 Sq.m	250	800 Linear Meters per day
8	Prefab Houses & Wooden Joinery Factory	100,000 Sq.m	300	8 Prefab Houses Per Day
9	Civil Works -Warehouse	10,000 Sq.m	2500	8 Prefab Houses Per Day
TOTAL		390,000 Sq.m	5,000 ++	8 Prefab Houses Per Day

One-Stop Shop Solution

- ❖ In-House Design Team & Facility
- ❖ In-House Testing Facility
- ❖ In-House Logistics / Transportation
- ❖ Engineers and Project Managers
- ❖ QA / QC Team
- ❖ HSE Team
- ❖ State-of-the-Art Technology, Software & Machineries
- ❖ Skilled and Trained Fabrication & Installation Teams





EXTRACO
INDUSTRIES INDIA PVT. LTD

UAE Clients



We value every project and execute the best practices in our fields to provide top quality infrastructures and different areas of expertise which includes engineering, execution / construction of infrastructure projects, integrated water transmission & distribution projects, reservoirs, commercial & residential complexes.



The Precast Business Unit manufactures and installs decorative interior and exterior cladding and stand-alone elements in GFRC, GFRG, GFRP, UHPC (Precast) Business Unit

BUSINESS UNIT	DIVISIONS	PRODUCT RANGES
Precast	GFRC / GFRP Glass Fiber Reinforced Concrete Glass Fiber Reinforced Polymer	Panels & 1-Way Screens (For Wall/Ceiling Cladding)
		2-Way Screens (For Partitioning/Aesthetics)
		Brackets & Cornices
		Columns & Pedestals
		Balustrades/Handrails
		Window Frames
		Sculptures
	GFRG Glass Fibre Reinforced Gypsum	Decorative Gypsum
		Dry Walls & Ceilings
	UHPC Ultra-High Performance Concrete	Structural Precast Concrete
		Decorative Precast Concrete

ISO 9001:2008 Certified for all products and services in UAE

- GFRC





GFRC

Cornices,
Brackets & Arches



GFRG / GFRG

Handrails,

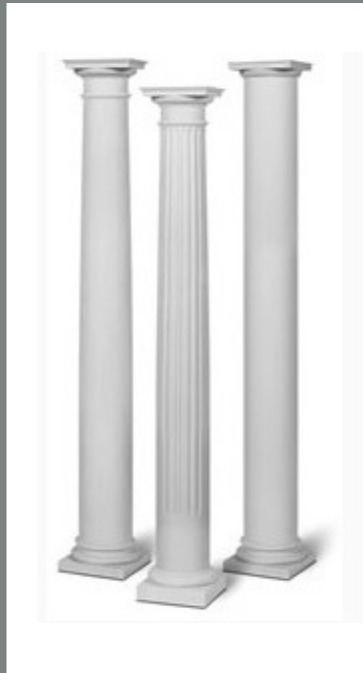


Balustrades
&
Scriptures





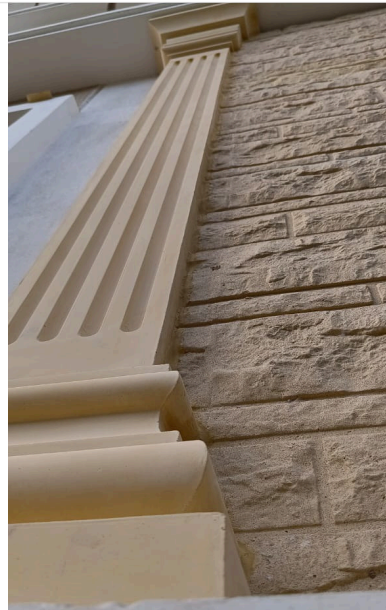
GFRG / GFRC Columns





GFRC PROJECT

Hyderabad, golden height



Laad Bazaar

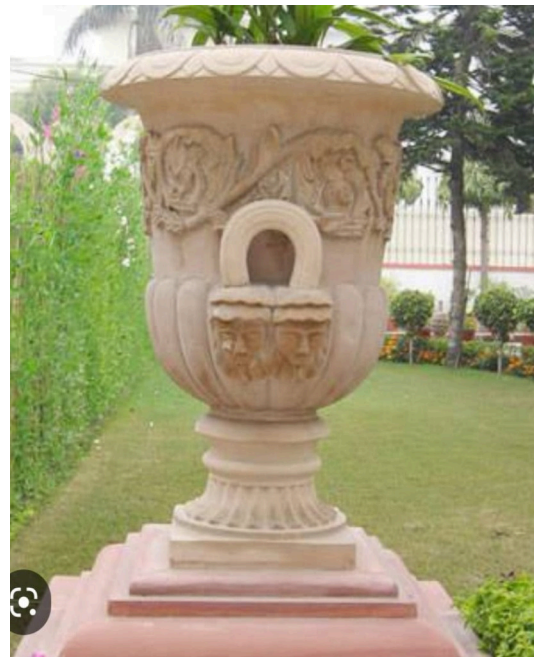
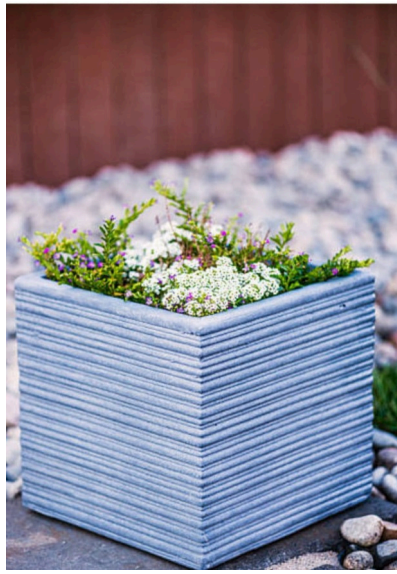


GFRC Cladding



GRC / GRG INTERIOR WORKS





GFRP PLANTER



GFRC PLANTER



" Abu Dhabi Airport , GFRC & GFRG "

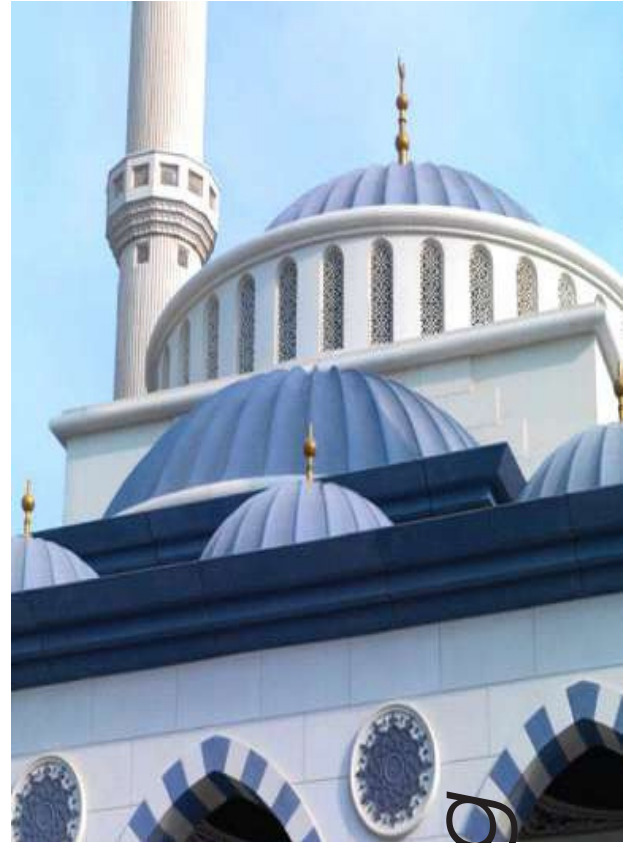


MTB CP1
BUTTRESS
– ABU DHABI

MASDAR CITY
- ABU DHABI



FOUR SEASONS
HOTEL
- ABU DHABI



Religious Places - DUBAI



Religious Building - DUBAI



KALEIDOSCOPE
TOWER
- ABU DHABI



CRESCENT
TOWER
- DUBAI

CITY TOWER
- AJMAN



LAGO VISTA
TOWER
- DUBAI

GFRC / GFRG Projects

JUMEIRAH BEACH RESIDENCES SECTOR 1 - DUBAI



COURT BUILDING Fujairah



MERCATO MALL
DUBAI



TURNKEY INTERIOR



DUBAI MARINA MALL

NATIONAL BANK OF KUWAIT HQ BUILDING



GFRP Cladding Steel Canopy



SARAYA TOWER

– ABU DHABI

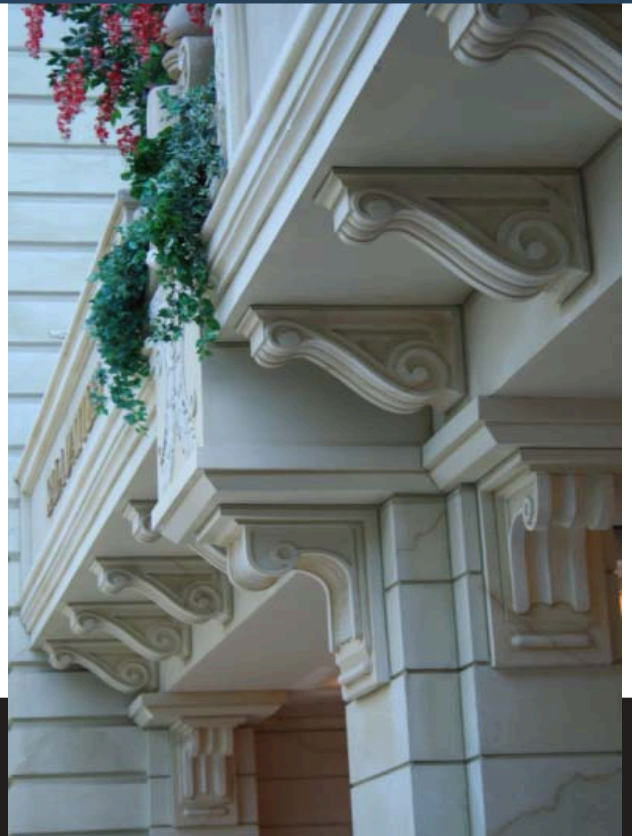
UHPC



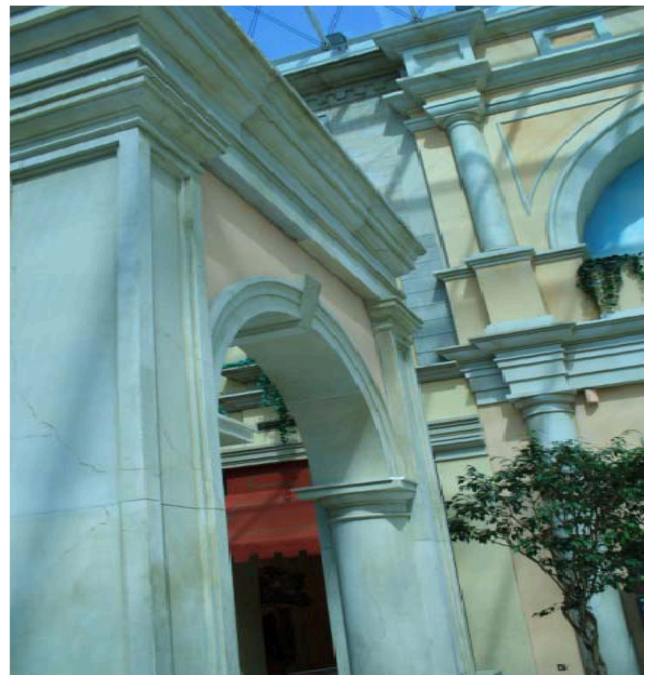
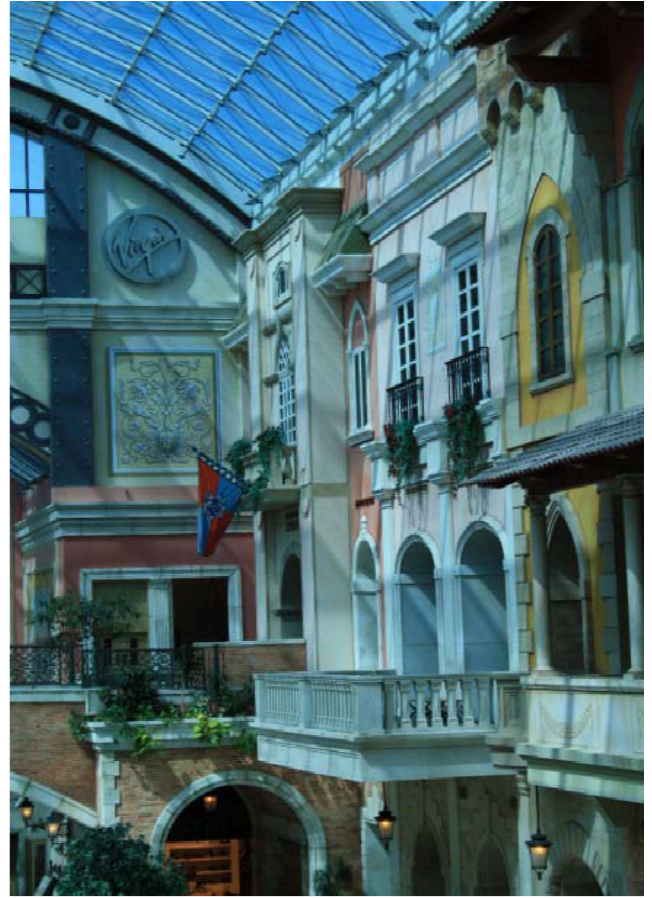


ATLANTIS HOTEL & RESORT - DUBAI

GRC / GRG INTERIOR WORKS



GRC / GRG INTERIOR WORKS



INTERIOR

The Interiors Division manufactures many different products and provides many services to meet customer requirements. The Division can handle discrete product orders but can also take on complete turnkey furniture and fit-out projects, which would include flooring (raised flooring, tiles, wooden flooring, carpets, etc...), ceilings (false ceiling, gypsum boards, gypsum decoration), lighting appliances, furniture (chairs, tables, sofas, cupboards, etc...), doors & door frames, windows, sanitary ware, wall painting, and others. Some of the Interiors Division product ranges include Furnishings & Fit-Outs, Doors & Frames, Raised Floors, and Dry walls & False Ceilings.

Prefab & Interiors Business Unit

Extra Co Prefab & Interiors Business Unit was established in the early years of Extra Co's existence. This Business Unit started with the production of prefabricated houses and evolved to add the production of furnishings and carpentry work for all industries. The Prefab & Interiors Business Unit is split into two Divisions: Prefab and Interiors



Manufactures both standard and custom-designed prefab houses for temporary and permanent use as well as complete interior fit-outs and carpentry work

BUSINESS UNIT	DIVISIONS	PRODUCT RANGES
<p>Prefab & Interiors</p>	<p>Prefab</p>	<p>Prefab Site Offices</p> <p>Prefab Accommodation</p> <p>Prefab Ablutions, Kitchens & Halls</p> <p>Prefab Guard Houses & Kiosks</p>
	<p>Turnkey Interiors</p>	<p>Interior Cladding, False Ceiling & Partition Dry Wall, Marble & Stone works etc.</p> <p>GFRG GFRC GFRP Steel Architectural Elements</p> <p>Fit-Out, Joinery & Carpentry Works</p>

ISO 9001:2008 Certified for all products and services



BM Trada (Q-Mark) certified for Timber, Steel and Composite Fire Doors



UAE Civil Defense certified for Timber Fire Doors

The Structural Steel & Aluminium Business Unit manufactures and erects Steel Structures, Aluminium products and produces standard steel profiles, sheets, scaffolding and form work.



STEEL STRUCTURES,
METAL WORKS IN UAE

&
ALUMINIUM BUSINESS UNIT

www.extracoind.com
www.extraco.ae

BUSINESS UNIT	DIVISIONS	PRODUCT RANGES
Structural Steel Buildings, Metal Works & Aluminium Business Unit	Steel Structures	PEB / Built-Up Sections & Hot-Rolled Sections
		Structural / Non-Structural Steel Works
		Steel Ladders, Staircases & Doors
		Miscellaneous & Custom Steel Products
	Steel Re-Bar Cut & Bend	Steel Reinforcements Bars
		Steel Reinforcement Stirrups
	Steel Scaffolding & Formwork	Scaffolding
		Formwork
	Steel Roll Forming	Steel Pipes & Tubes
		Structural Steel Profiles
		Metal Sheet Profiles
	Aluminium Doors & Windows	Hinged Windows & Doors System
		Thermal Break Hinged Windows & Doors
		Aluminium Tilt & Turn Windows & Doors System
		Sliding Windows & Doors
		Thermal break sliding Windows & Doors
	Aluminium Canopies	Canopies
	Aluminium Composite Panels	Composite Panels
	Handrails	Handrails
	Sky Lights	Skylights

DUBAI HILLS MALL

1800 MT

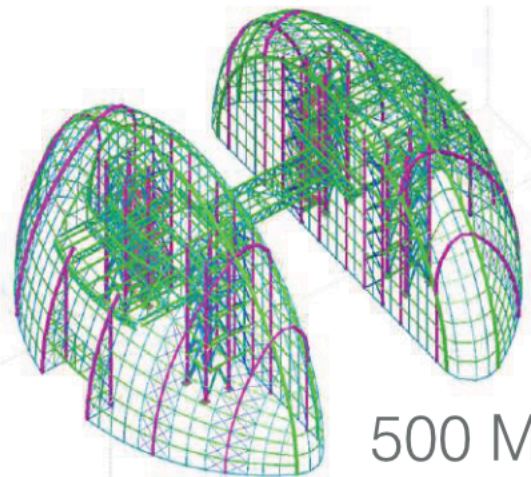


LULU AVENUE MALL

FAÇADE WORKS @ DSO



NAKHEEL Mall



500 MT

ONE
AT
PALM
JUMEIRAH
CANOPY &
SLAB EDGE



ABU DHABI
INTERNATIONAL
AIRPORT

Midfield Terminal Building
8500 MT







AL AIN - BAWADI MALL
680 MT x 4 Nos.



Al Ain – Bawadi Mall
680 MT x 4 Nos.



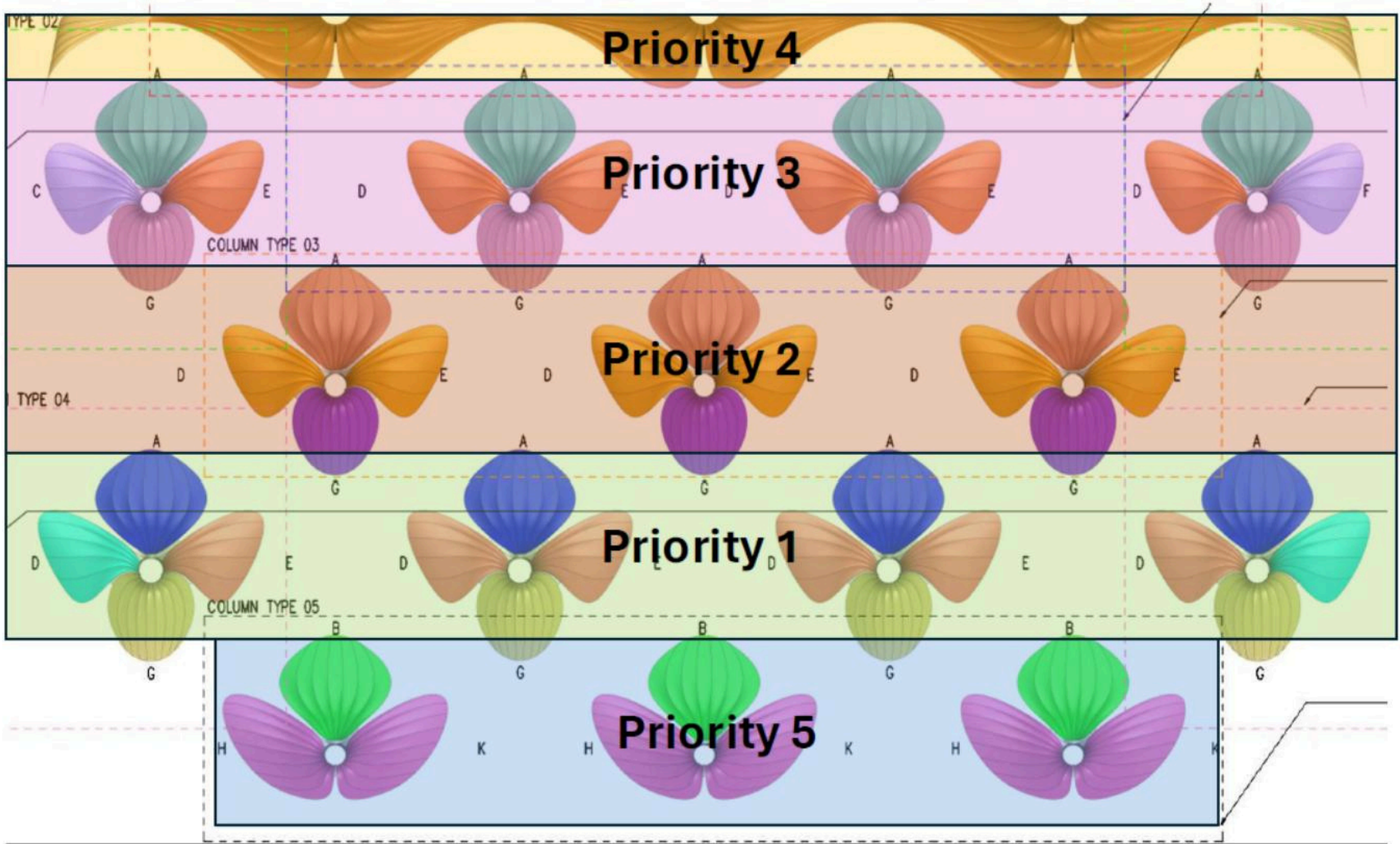
Al Ain - Bawadi Mall Food Court
300 MT

Al Ain
BAWADI MALL
SKY LIGHT
680 MT x 4 Nos.

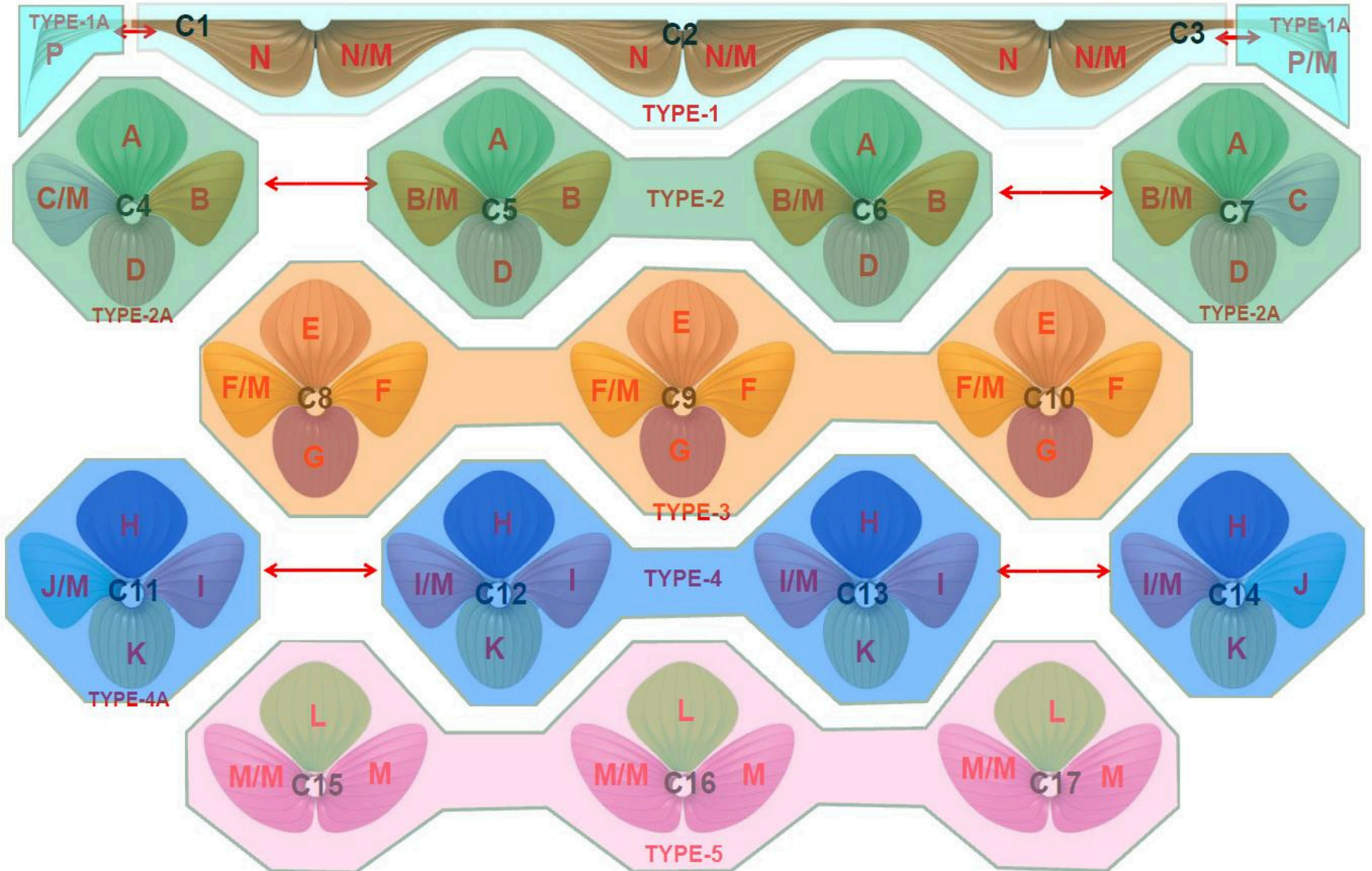
***NAVI MUMBAI INTERNATIONAL AIRPORT
GFRG SpecialistWorks–DetailedExecutionWorks - Petals***

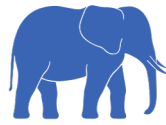


GFRG Sequence of work - Priority



WF-20 , Panel Sequencing





EXTRACO
INDUSTRIES INDIA PVT. LTD

FACTORY PHOTOS



PRODUCTION METHODOLOGY – PANEL CASTING



Releasing Agent



Slurry Mix



Face Mix Spray



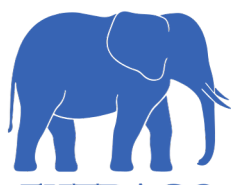
First Layer Compaction



Rib Placement

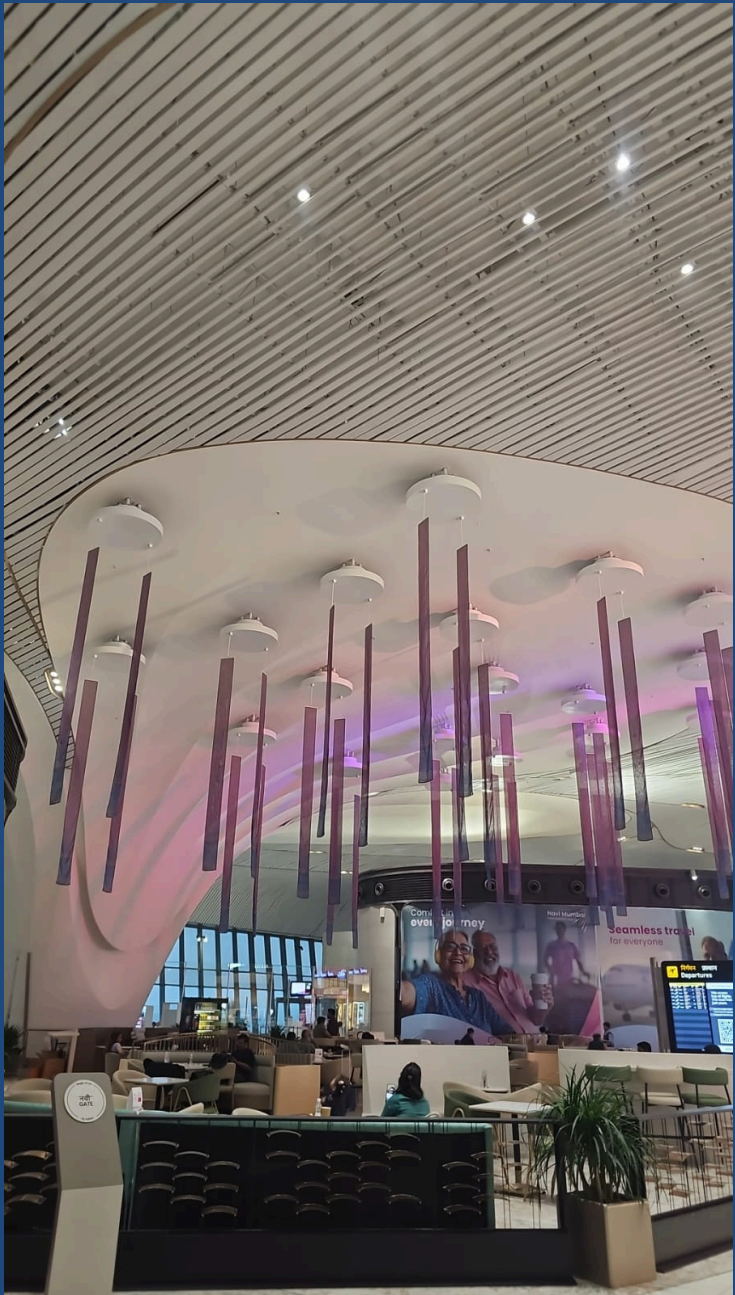
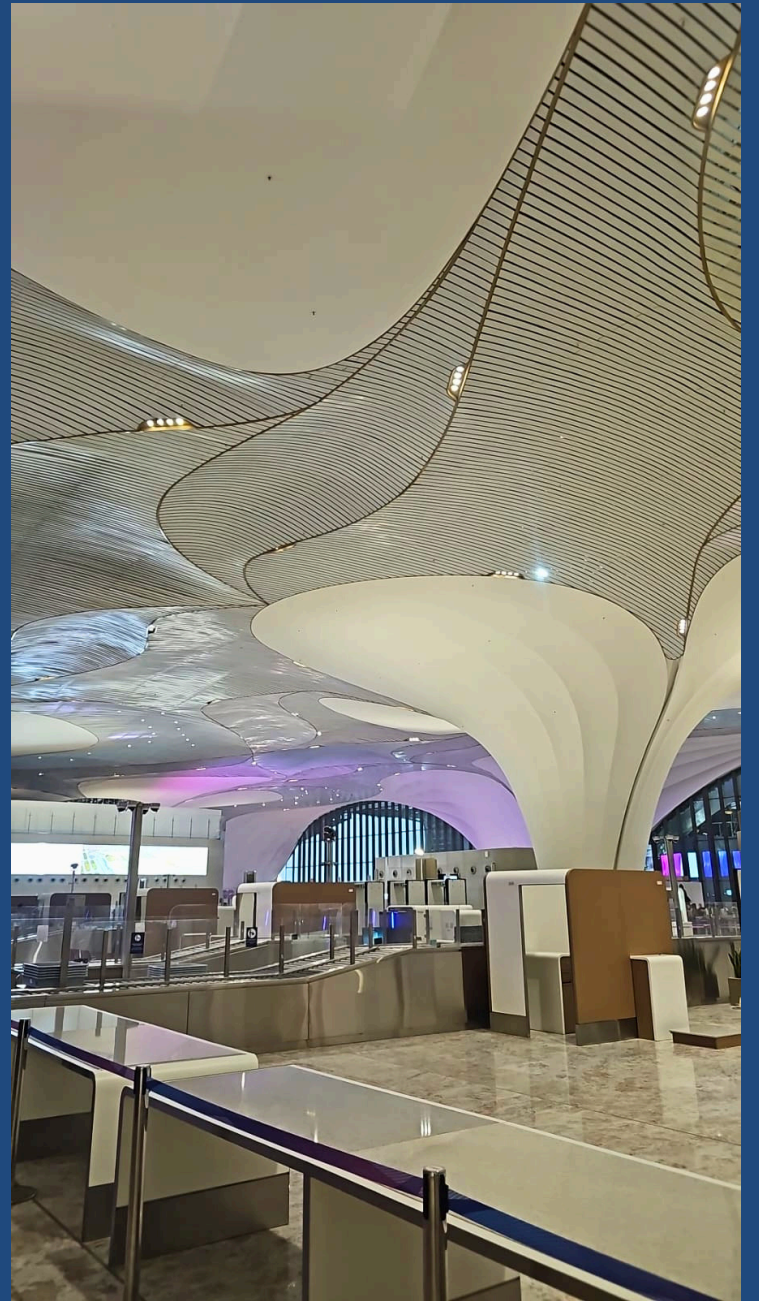


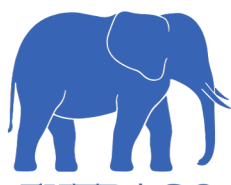
De-Moulded Panels



EXTRACO
INDUSTRIES INDIA PVT. LTD

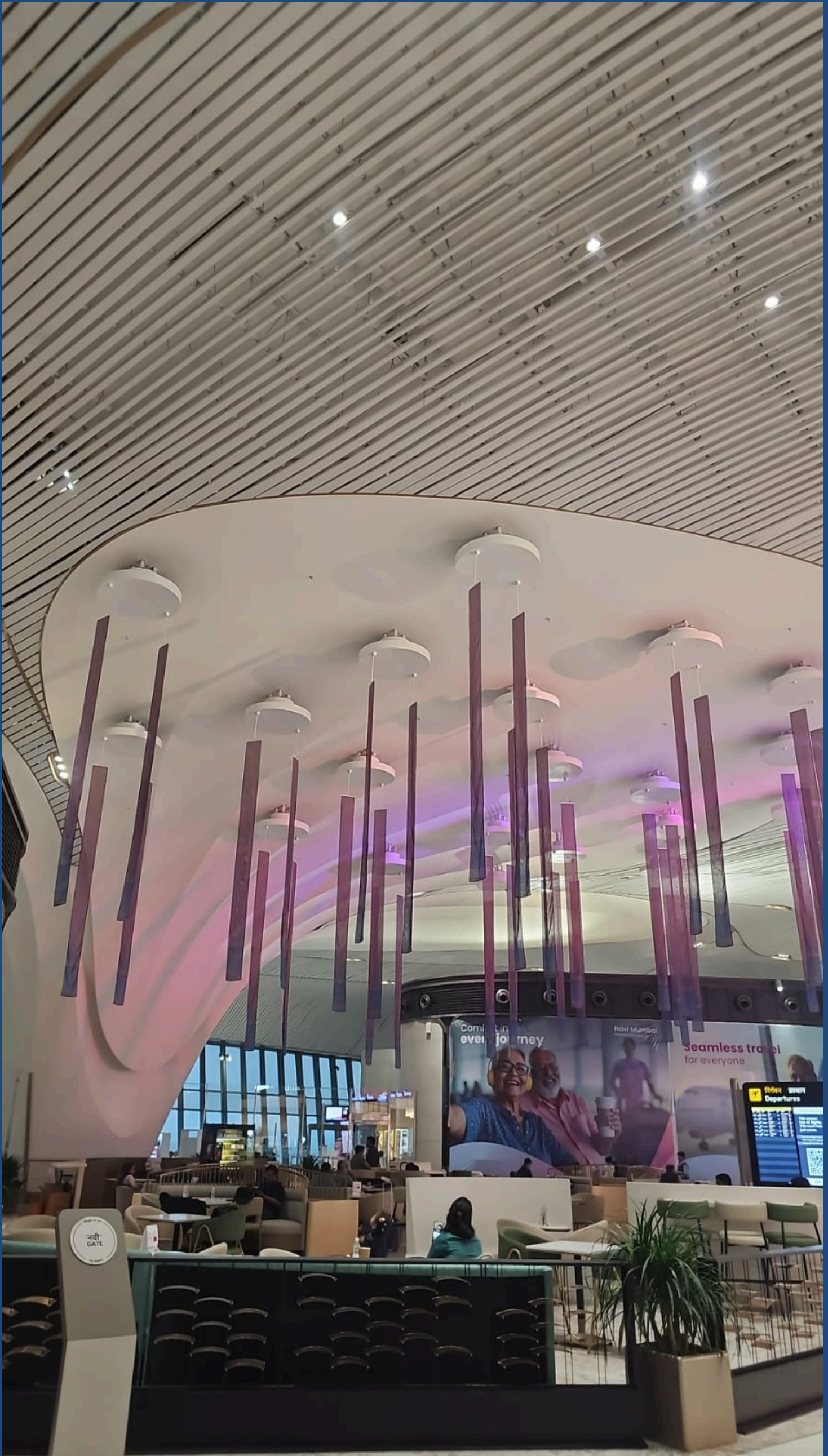
- Finished work





EXTRACO
INDUSTRIES INDIA PVT. LTD

- Finished work





Mr.Habeeb Abdul Wahhab khan (Managing Director of Extraco), Mr.Rakesh Patil (DGM Projects Adani), Mr.Rajesh Panchlot (Project Director L&T), Mr.Narin Gobindranath (Vice president Design L&T), Mr.Suman Chanda (Vice president L&T), Mr.Pankaj Sharma (Design Adani), Mr.Chintan Shukla (Design head Adani), Mr.Dharminder Benipal (General Manager Projects Adani), Mr.Akil Karimi (Director of Extraco), Mr.Abdur Rahman Wajid khan(Project Director of Extraco),



NMIA PROJECT
WORLD QUALITY MONTH
CELEBRATIONS - NOV 25
BEST PERFORMING
SUBCONTRACTOR - FINISHING
M/S EXTRACO



LARSEN & TOUBRO

Q

adani

NAVI MUMBAI INTERNATIONAL AIRPORT
PROJECT

CERTIFICATE OF EXCELLENCE

This Certificate is proudly awarded to

M/s Extraco

For Achieving **Best Performing Sub-Contractor**
During the Quality Month Celebrations November - 2025

K. Ranjan
K. RANJAN
HEAD QA/QC
L&T CONSTRUCTION
NMIA PROJECT

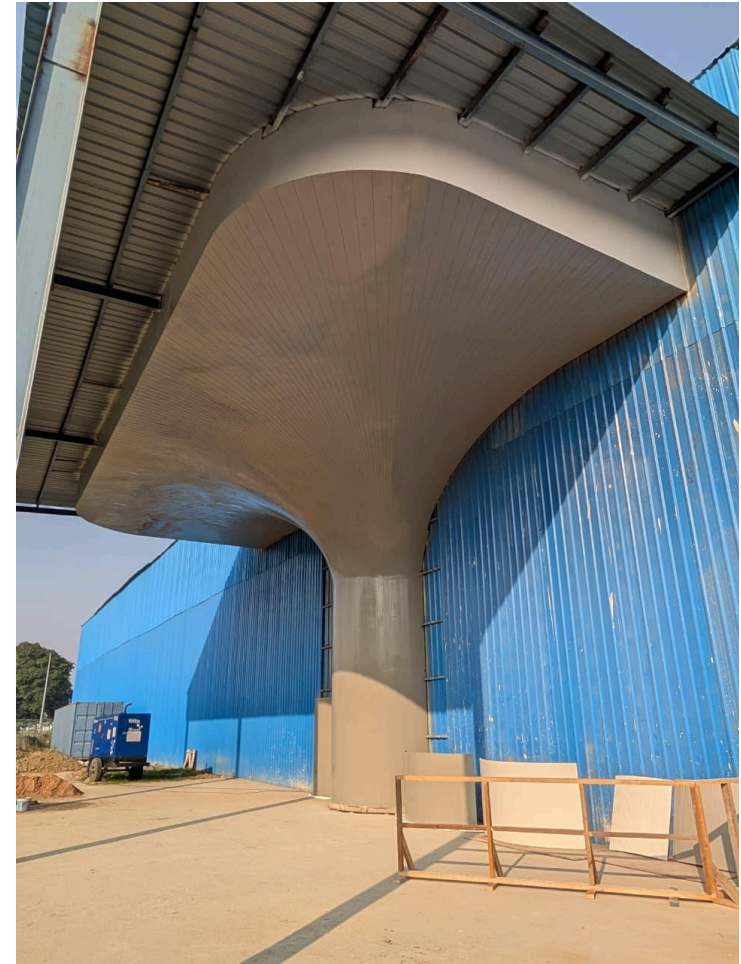
Rajesh Pachlot
RAJESH PACHLOT
PROJECT DIRECTOR
L&T CONSTRUCTION
NMIA PROJECT

Suman Chanda
SUMAN CHANDA
TFL HEAD
L&T CONSTRUCTION
NMIA PROJECT

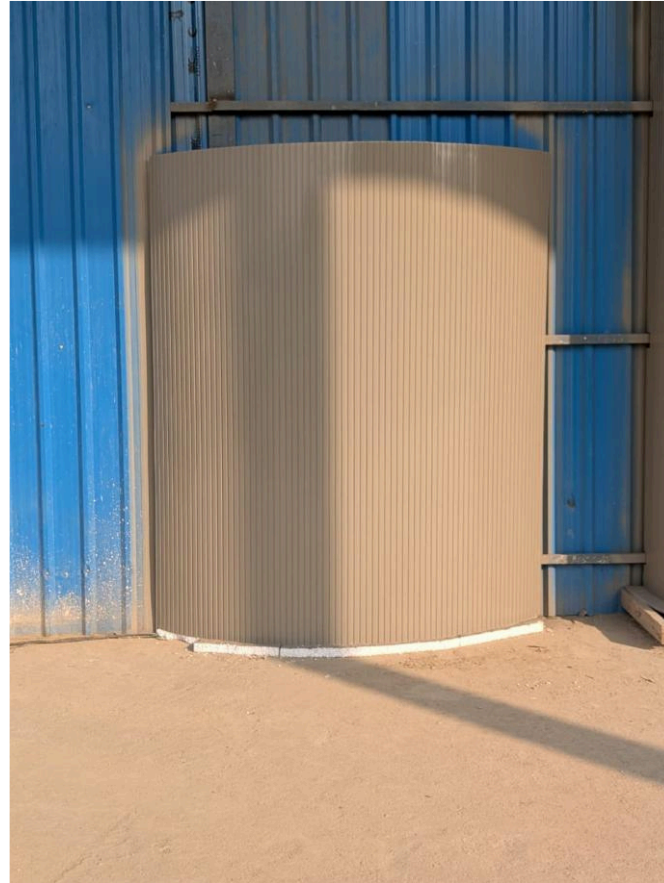
GFRP PANEL DESIGN AND SECONDARY STRUCTURAL SYSTEM LUCKNOW AIRPORT



MOCK UP (GYPSUM)



MOCK UP and SAMPLES (GFRP)



Approved color Jotun 1284



Approved color Ral 9001

GLAZING SIDE COLUMN



The shop drawings for the glazing side columns has been finalised and we have submitted the same for approvals.

FACIA



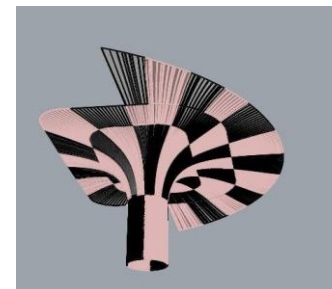
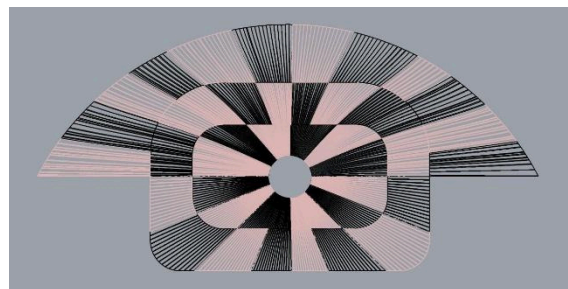
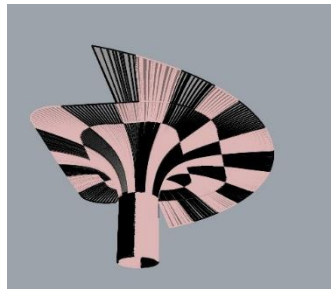
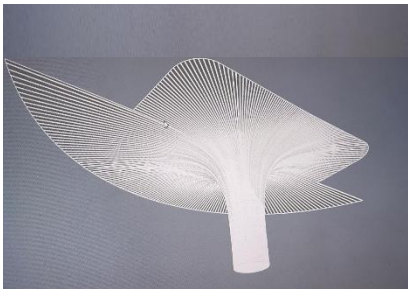
The shop drawings for the facia has been finalised and we will be submitting the same for approval.

CANOPY SIDE COLUMN – A



CANOPY SIDE COLUMN – A
Typical columns – 8 nos.

Instructions were given to prepare GFRP mockup, We received updated model on 28th October, based on that we are prioritizing the columns on grid 44 and 46. We have initiated the design of canopy side column.



The pictures above highlight the design progression with respect to panel thickness and splitting, the colour difference only highlights the panel splits and not the final finish.

Current Site Conditions



Phase 3 Canopy and Stack columns, construction ongoing. Structure work pending, Upon completion primary steel will be installed , MEP services will be completed which will make way for GFRP installation.



Glazing and terminal side columns, Services work ongoing.



ADNOC HQ - Security Room



Government of Kuwait
National Day Parade



Extra Co Industries India Pvt. Ltd.

📍 PARK HABEEB PLOT 44 & 45, GOLDEN HEIGHTS, PHASE 3,
ATTAPUR, HYDERABAD TELENGANA

☎ +91 8850035928 | +91 9152317167 | +91 9849777307

✉ info@extracoind.com

🌐 www.extracoind.com